

## Learn About Forensic Imaging Filters

SDFI's Negative Invert Filter, NIF **CANNOT AND DOES NOT** determine intent or cause, consent or non-consent, guilt or innocence, diagnose, analyze, or distinguish right from wrong, or "see" under the skin.

SDFI's Negative Invert Filter, NIF is **NOT** a bruising filter, a negative inverse filter or a histogram equalization filter. It is **NOT** a light or a light filter, an ALS or a contrast light.

### About SDFI®-TeleMedicine (SDFI®)

[SDFI®-TeleMedicine](#) offers a Secure Digital Forensic Imaging System designed for examiners and investigators processing sexual assault cases, intimate partner violence, homicide, child abuse cases, human trafficking, and death investigations.



*Photo Credit: SDFI® - TeleMedicine*

The SDFI System is a turnkey solution intended to serve the needs of crime victims, as well as the medical and legal communities. SDFI®-TeleMedicine is used at numerous hospitals, independent forensic service locations, child advocacy centers, police departments, risk management departments and military hospitals throughout the nation.

### What are Contrast Filters?

In photography, you capture contrast; otherwise, photographs would be blank. An example of a photograph without contrast would be an all-black photo void of anything except black (this happens when you leave the lens cap on). That all-black picture is still a high-resolution photograph, except it is a photograph without contrast.

Contrast filters simply help you see existing detail. They do not add or take anything away from the subject itself; they only "highlight" what is already there like a Yellow Highlight Marker on printed-paper.

SDFI's Negative Invert Filter, NIF **CANNOT AND DOES NOT** determine intent or cause, consent or non-consent, guilt or innocence, diagnose, analyze, or distinguish right from wrong, or "see" under the skin.

SDFI's Negative Invert Filter, NIF is **NOT** a bruising filter, a negative inverse filter or a histogram equalization filter. It is **NOT** a light or a light filter, an ALS or a contrast light.

A great example of a contrast filter would be a pair of sunglasses. Without them, everything looks "too" bright, which makes it hard to see. When this happens, your iris closes and when your iris cannot close anymore, we tend to squint in an effort to reduce the amount of light that shines into your eyes. With sunglasses on, light is filtered resulting in the ability to see better on a bright sunny day.

## Types of Contrast Filters

There are numerous types of contrast filters.

Unfortunately, we cannot cover every filter type here. **In forensics, there are light filters, liquid filters, powder filters, chemical filters, camera filters, digital filters among many others.**

Light filters are very common. Black Lights or Woods Lamps have been used to see better for decades.

In the photo example shown on The New England Journal of Medicine's web page at <http://www.nejm.org/doi/full/10.1056/NEJMicm053764>, the 58-year-old woman had white facial patches that had progressively increased in size during a period of several months. A physical examination revealed hypo-pigmented macules that were symmetrically distributed on her face. These lesions became more evident after an examination with a Wood's Lamp light filter consistent with vitiligo, the loss of skin color in blotches.

In the picture below, a 390nm UV light was used to show skin damage, damage caused by the sun.



*Photo Credit: SDFI-TeleMedicine*

SDFI's Negative Invert Filter, NIF **CANNOT AND DOES NOT** determine intent or cause, consent or non-consent, guilt or innocence, diagnose, analyze, or distinguish right from wrong, or "see" under the skin.

SDFI's Negative Invert Filter, NIF is **NOT** a bruising filter, a negative inverse filter or a histogram equalization filter. It is **NOT** a light or a light filter, an ALS or a contrast light.

### Chemical Filters

According to the [Journal of Oral and Maxillofacial Pathology](#), chemical filters (like Toluidine Blue (TB), a thiazine metachromatic dye) selectively stain acidic tissue components. TB stains tissues based on the principle of metachromasia. The dye reacts with the tissues to produce a color different from that of the original dye and from the rest of the tissue. Metachromasia is a phenomenon whereby a dye may absorb light at different wavelengths depending on its concentration and surroundings and it has the ability to change its color without changing its chemical structure. The physical changes that bring about this color change are a specialized, orderly form of dye aggregation. For metachromasia to occur there must be free electronegative groups on the surface of tissues. In non-technical language, TB adheres to damaged tissue so you can locate and identify injury. It helps you see better by providing contrast.



Ano-genital injury depicting multiple lacerations and toluidine blue dye uptake, down the perineum and around the anus.

*Photo Credit: SDFI-TeleMedicine*

SDFI's Negative Invert Filter, NIF **CANNOT AND DOES NOT** determine intent or cause, consent or non-consent, guilt or innocence, diagnose, analyze, or distinguish right from wrong, or "see" under the skin.

SDFI's Negative Invert Filter, NIF is **NOT** a bruising filter, a negative inverse filter or a histogram equalization filter. It is **NOT** a light or a light filter, an ALS or a contrast light.

### Camera Filters

Camera filters, both glass and plastic, have been used for hundreds of years and are the most common filter used in photography, digital or otherwise. The picture below is self-explanatory.



Photo Credit: Kain Kalju.

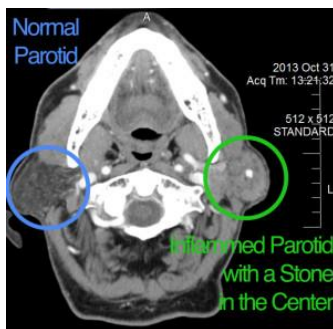
### Other Contrast Filters

X-Ray photographs, MRI photographs and CT scans are excellent examples of medically filtered images. These filtering tools are common within the medical community and widely accepted. Unlike the Wood's Lamp light filter, we do not compare these filtered images side by side with the actual subject. The primary benefit of X-Rays, MRI's and CT scans is not performing exploratory surgery. With digital filters, you can compare side by side.



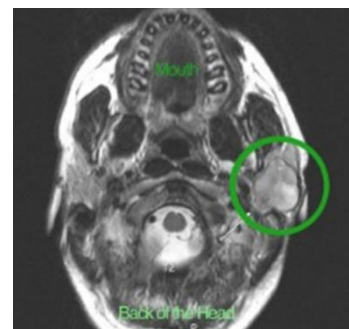
Courtesy of:

[Journal of Clinical Microbiology](#)



Courtesy of:

[Center for Advanced Parotid Surgery](#)



Courtesy of:

[Center for Advanced Parotid Surgery](#)

SDFI's Negative Invert Filter, NIF **CANNOT AND DOES NOT** determine intent or cause, consent or non-consent, guilt or innocence, diagnose, analyze, or distinguish right from wrong, or "see" under the skin.

SDFI's Negative Invert Filter, NIF is **NOT** a bruising filter, a negative inverse filter or a histogram equalization filter. It is **NOT** a light or a light filter, an ALS or a contrast light.

### Digital Filters

Within the forensic community, filters are applied globally, over the entire image at the same time. A common example of this is shown below where a digital brightness filter is used. Here we can take a dark image, and we can brighten it.

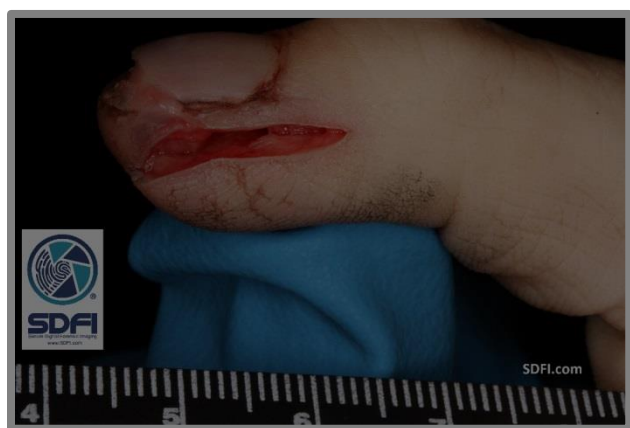


Photo Credit: SDFI - TeleMedicine

### SDFI's Negative Filter – Applied via SDFI's Image Management Software

The old film-based photography process first produces "negative" filmstrips. They were converted to printed-paper, based on "positives" after capture and through a chemical process; we could look at a "normal" looking photograph. Digital negative filters do the same thing based on additive and subtractive pixel color values originally captured by a digital camera. A color positive is represented by additive RGB color values. A color negative is represented by subtractive CMY color values.

There are 16,777,216 possible colors in a 24-bit pixel. Many pixels together can produce a variety of color tones. How light or dark these "tones" are depends on the numbered color values within each pixel. It is critically important to know that color tones are seen relative to other color(s) shown in that area of an image. How dark or light a "tone" is perceived depends on what other color pixels are shown around it.

When the negative filter is applied to a color positive image by itself, a static string of computer code effectively converts primary additive colors to their opposite secondary subtractive color values. Red areas of the image tend to appear more "cyan", green areas tend to appear more "magenta" and blue areas tend to appear more "yellow".

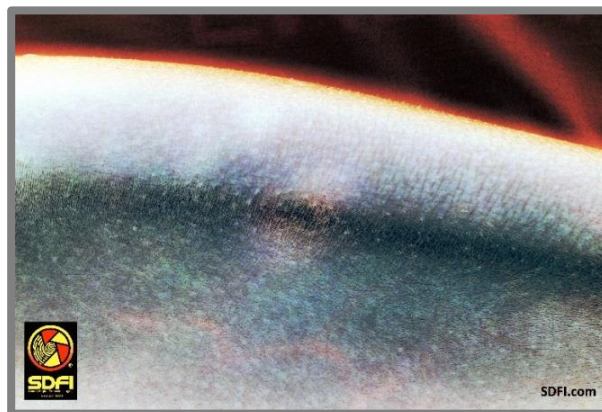
SDFI's Negative Invert Filter, NIF **CANNOT AND DOES NOT** determine intent or cause, consent or non-consent, guilt or innocence, diagnose, analyze, or distinguish right from wrong, or "see" under the skin.

SDFI's Negative Invert Filter, NIF is **NOT** a bruising filter, a negative inverse filter or a histogram equalization filter. It is **NOT** a light or a light filter, an ALS or a contrast light.

**Color Positive**



**After Applying the SDFI Negative Filter**



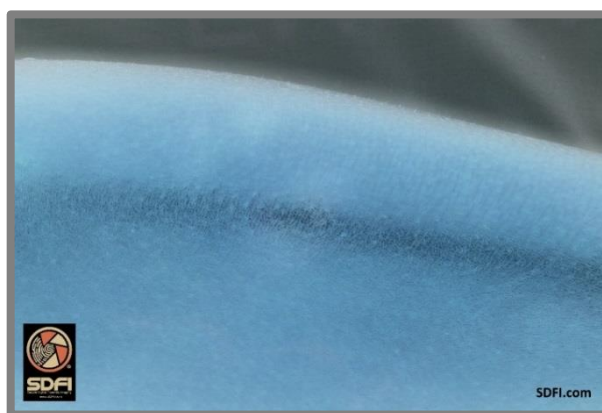
**SDFI's Invert Filter**

The Invert Filter, by itself, inverts the numeric color value in each pixel to produce an opposite numeric color value.

**Color Positive**



**Same Image after Applying the SDFI Invert Filter**



Display color, like the color you see when you look at your computer screen, is made up of RGB colors or (R)ed, (G)reen and (B)lue colors. Computer screens and standard JPG color images display a range of colors. Each of those individual RGB colors is defined by a number from 0 through 255. 0 is black, 128 is gray and 255 is white.

SDFI's Negative Invert Filter, NIF **CANNOT AND DOES NOT** determine intent or cause, consent or non-consent, guilt or innocence, diagnose, analyze, or distinguish right from wrong, or "see" under the skin.

SDFI's Negative Invert Filter, NIF is **NOT** a bruising filter, a negative inverse filter or a histogram equalization filter. It is **NOT** a light or a light filter, an ALS or a contrast light.

In this color model, the three primary additive colors, Red, Green and Blue, are always discussed in the "Red, Green, Blue" color order. Subsequently, the numeric value of these colors is also discussed in RGB color order. "0,0,0" is a pixel that is seen as black. "128, 128, 128" is a pixel seen as gray. "255, 255, 255" is a pixel that is seen as white. Each of the three numbers, separated by a comma, represents each of the three primary additive (R)ed, (G)reen and (B)lue colors in this color model and they are always referred to as RGB.

Each of the three colors in this color model, Red, Green and Blue, have their own range of color between 0 and 255. The number 0 has value, meaning it is worth something when discussing and when presenting images on a standard computer screen. This means that one of 255 reds from 1, 0, 0 to 255, 0, 0 exists in each pixel. Each pixel in a 24-bit JPG color image has a combination of RGB colors in it. This means that even if there is "No Visible Red" in a pixel, your computer allocates space for the color red in each and every pixel throughout an entire image (*A single image might have 22,000,000 or more pixels. One million pixels together is called a Megapixel.*)

- 255, 0, 0 can be considered "high red". Inverted, red has the opposite numeric value of 0, 255, 255 or high cyan.
- 0, 255, 0 can be considered "high green". Inverted, green has the opposite numeric value of 255, 0, 255 or high magenta.
- 0, 0, 255 can be considered "high blue". Inverted, blue has the opposite numeric value of 255, 255, 0 or high yellow.

### Applying SDFI's Negative Invert Filter

When applied, the SDFI Negative Invert Filter provides a high contrast image that should ONLY be shown beside the original color positive for comparison.

**Color Positive**



**Applying the SDFI Negative Invert Filter, NIF**



SDFI's Negative Invert Filter, NIF **CANNOT AND DOES NOT** determine intent or cause, consent or non-consent, guilt or innocence, diagnose, analyze, or distinguish right from wrong, or "see" under the skin.

SDFI's Negative Invert Filter, NIF is **NOT** a bruising filter, a negative inverse filter or a histogram equalization filter. It is **NOT** a light or a light filter, an ALS or a contrast light.

## Important Legal Information

Without the original beside it, a filtered image may not be valid or legal. Never evaluate any filtered image without having access to the original to compare. X-Ray, MRI and CT scans are the obvious exceptions. To ensure that images are legal and original, SDFI users capture a RAW file alongside the JPG file. Regardless of your professional discipline, e.g., investigator, prosecutor, defense attorney or examiner, you should always ask for the original to ensure that the image has not been changed. RAW files are your legal original.

## For More Information

We hope you have found this discussion of various filters helpful. For more information on this topic, please see the SDFI guide entitled: [Using SDFI's Negative Invert Filter In Court](#). If you have questions about this training bulletin, please email SDFI® - TeleMedicine at [Support@SDFI.com](mailto:Support@SDFI.com), or, you can call us at, 310-492-5372.

## SDFI® Word and Acronym Glossary

**RGB:** Primary Positive Additive Color(s) = Red, Green, Blue. Higher numeric values represent lighter colors.

**High Red** = 255,0,0. A description of the highest value of red shown in a 24-bit image without any Green or Blue mixed in. "High Red" can also be used to describe color in 48-bit RAW images. 48-Bit High Red = 65536,0,0.

**High Green** = 0,255,0. A description of the highest value of green shown in a 24-bit image without any Red or Blue mixed in. "High Green" can also be used to describe color in 48-bit RAW images. 48-Bit High Red = 0,65536,0.

**High Blue** = 0,0,255. A description of the highest value of blue shown in a 24-bit image without any Red or Green mixed in. "High Blue" can also be used to describe color in 48-bit RAW images. 48-Bit High Red = 0,0,65536.

**CMY:** Secondary Negative Subtractive Color(s) = Cyan, Magenta, Yellow. Higher numeric values represent darker colors.

**High Cyan** = 0,255,255. The highest values of green and blue, in a 24-bit image, mixed without any red. The opposite of red.



SDFI's Negative Invert Filter, NIF **CANNOT AND DOES NOT** determine intent or cause, consent or non-consent, guilt or innocence, diagnose, analyze, or distinguish right from wrong, or "see" under the skin.

SDFI's Negative Invert Filter, NIF is **NOT** a bruising filter, a negative inverse filter or a histogram equalization filter. It is **NOT** a light or a light filter, an ALS or a contrast light.

**High Magenta** = 255,0,255. The highest values of red and blue, in a 24-bit image, mixed without any green. The opposite of green.

**High Yellow** = 255,255,0. The highest values of red and green, in a 24-bit image, mixed without any blue. The opposite of blue.

**Color Tone** = How light or dark a color is, rather than what the actual numeric value of color is.

**Digital Image** = A digital image is a numeric representation of a two-dimensional image.

**Digital Photograph** = See "Digital Image" above.

**Digital Picture** = See "Digital Image" above.

**Invert** = The "exact" reversal of numeric color values in a pixel or an array of pixels. An array of pixels or picture elements is seen as a digital image.

**Invert Filter** = A global software filter that exactly reverses the numeric color values within a pixel or an array of pixels. An array of pixels or picture elements is seen as a digital image. **SDFI'S Negative Invert Filter, NIF cannot be manipulated by the user to generate specific desirable results.**

*Demonstratable Proof of Filter Consistency:*

*Any user can copy a single image file with "CTRL-C" to copy it, then "CTRL-V" to paste it as many times as they want. With 5, 10, 20, 50, 100 or more exact same copies of the first image file, a user can apply this filter to each and all of these images, where they would save each of the filtered images to separate uncompressed .TIFF files, and thus be able demonstrate filter consistency down to the specific color values within each of the three RGB color channels found in an image pixel.*

**JPG or JPEG** = Joint Photographic Experts Group.

**Negative** = In reference to a negative color image showing a majority of negative color values, cyan, magenta and yellow.

SDFI's Negative Invert Filter, NIF **CANNOT AND DOES NOT** determine intent or cause, consent or non-consent, guilt or innocence, diagnose, analyze, or distinguish right from wrong, or "see" under the skin.

SDFI's Negative Invert Filter, NIF is **NOT** a bruising filter, a negative inverse filter or a histogram equalization filter. It is **NOT** a light or a light filter, an ALS or a contrast light.

**Negative Filter** = A software filter originally developed to convert scanned color print film to a color positive. This software filter was originally designed to compensate for the extra orange tint that existed in scanned color negatives and to boost contrast during the conversation process. Today, this filter it is used to convert images captured with digital cameras back to digital color negatives using the opposite process. SDFI'S Negative Invert Filter, NIF **cannot** be manipulated by the user to generate specific desirable results.

Demonstratable Proof of Filter Consistency:

*Any user can copy a single image file with "CTRL-C" to copy it, then "CTRL-V" to paste it as many times as they want. With 5, 10, 20, 50, 100 or more exact same copies of the first image file, a user can apply this filter to each and all of these images, where they would save each of the filtered images to separate uncompressed .TIFF files, and thus be able demonstrate filter consistency down to the specific color values within each of the three RGB color channels found in an image pixel.*

**Negative Invert Filter** = A combination of two separate filters, used one after another, to display high contrast in an image. SDFI'S Negative Invert Filter, NIF **cannot** be manipulated by the user to generate specific desirable results.

Demonstratable Proof of Filter Consistency:

*Any user can copy a single image file with "CTRL-C" to copy it, then "CTRL-V" to paste it as many times as they want. With 5, 10, 20, 50, 100 or more exact same copies of the first image file, a user can apply this filter to each and all of these images, where they would save each of the filtered images to separate uncompressed .TIFF files, and thus be able demonstrate filter consistency down to the specific color values within each of the three RGB color channels found in an image pixel.*

**Pixel** = Acronym for "Picture Element"

**Positive** = In reference to a "normal" looking color positive image showing a majority of positive color values, red, green, and blue.

END